

The FTM-350 Programmer is designed to give you the ease and convenience of programming the memories and set menu options of your radio from your PC.

Memory Channels Include:

- 500 Left Memory Channels
- 500 Right Memory Channels
- 18 Left Limit Memories (9 pair)
- 18 Right Limit Memories (9 pair)
- 7 Left VFO Channels
- 5 Right VFO Channels

Other Menu Item Categories Include:

- Common
- DTM/Internet/Weather
- APRS/GPS
- APRS Beacon
- Options

The Programmer Is for so Much More than Just Memory Management.

With the FTM-350 Programmer you can begin a new “factory fresh” file into which frequencies and option settings are entered. Or, you can read from the radio, store these details on your computer and make changes. Then, with minimal button pushing, send the new configuration back to the radio.

The Programmer allows you to create and save as many files as you want for your radio. Files can even be shared between users via email or the Internet. Any RT Systems Version 4 program can open a file from any other RT Systems Version 4 programmer... even from a different radio.

Managing all the options of this great little radio becomes easy with the Programmer. The cut, copy, paste and insert features of the Programmer make channel management easier than ever.

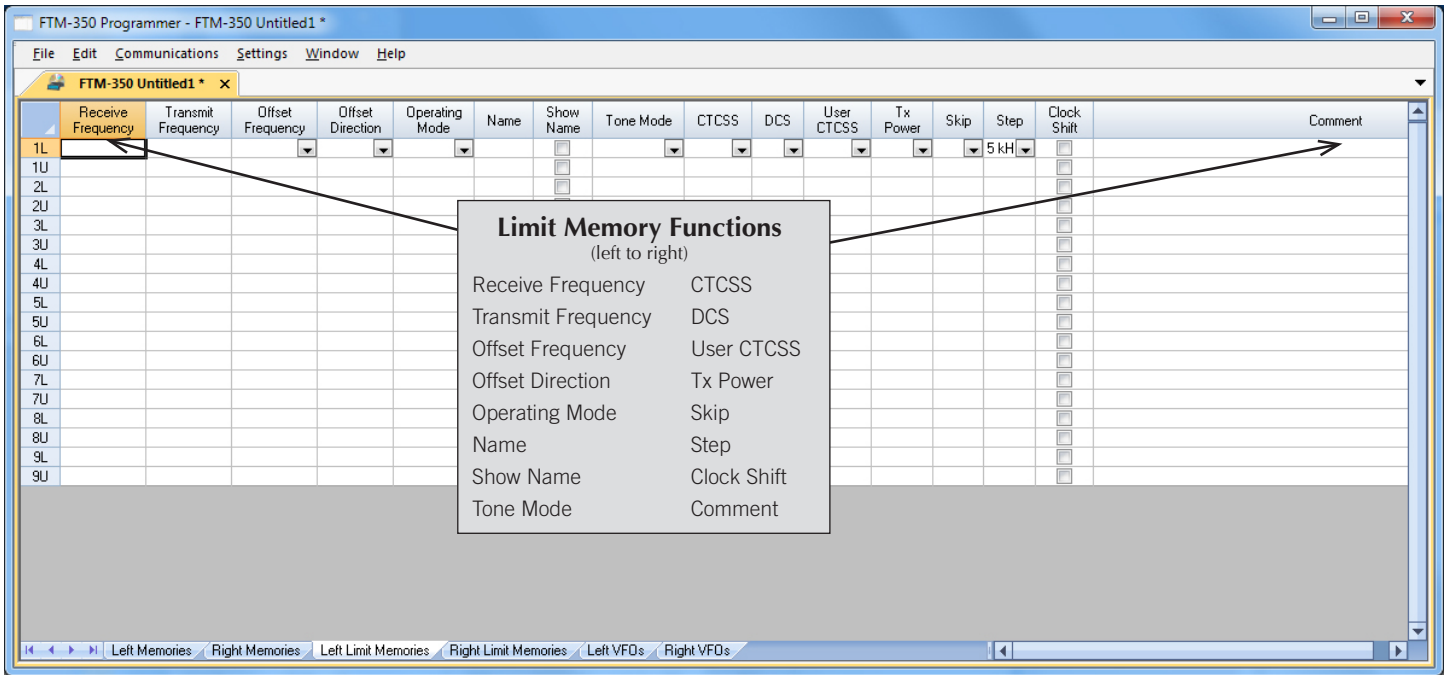
Open more than one file at a time. Memory channel information can be copied from one file to another within the Programmer making it really easy to set up a new file.



Hardware Requirements:

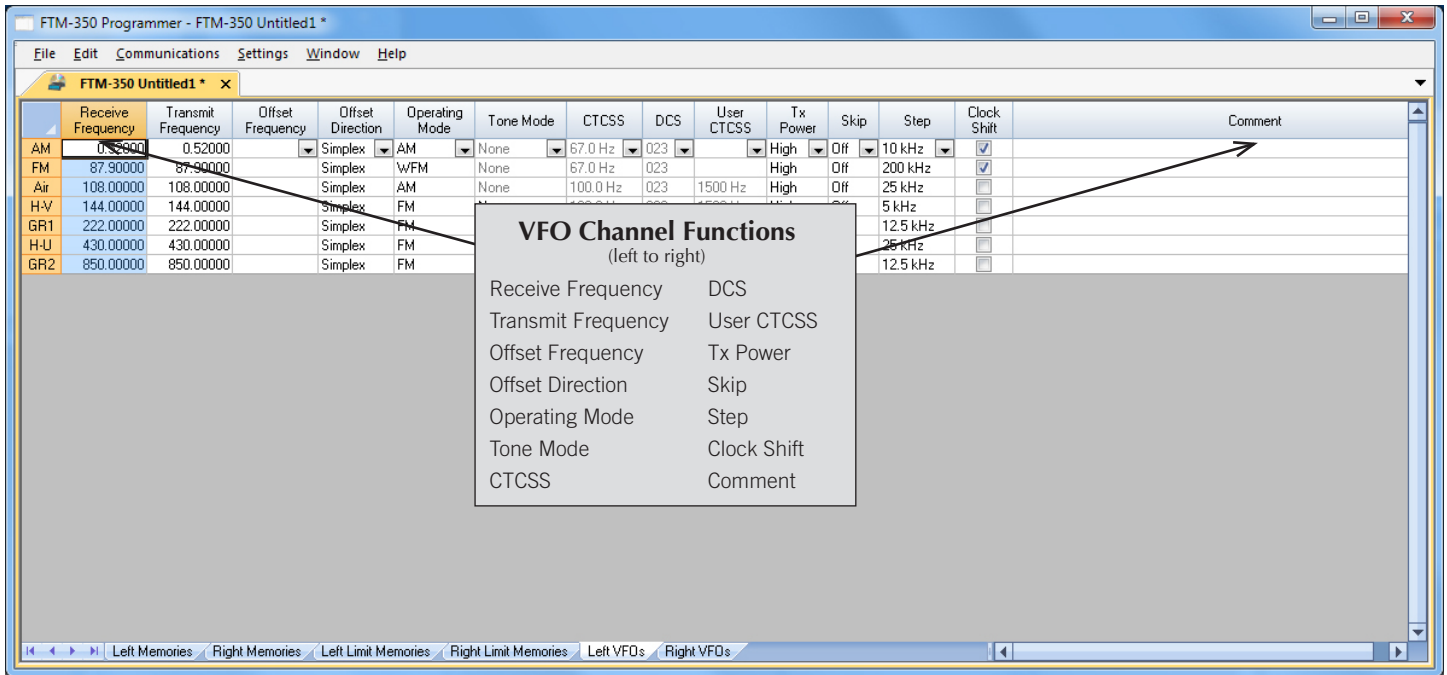
A PC running Windows XP, Vista, Windows 7 (32 or 64 bit) or Windows 8 (full version). A CD drive (local or network) for installation. A free USB port. The RT Systems USB-81 interface cable. The cable connects the radio to the computer from the USB port on the computer to the Data jack on the radio.





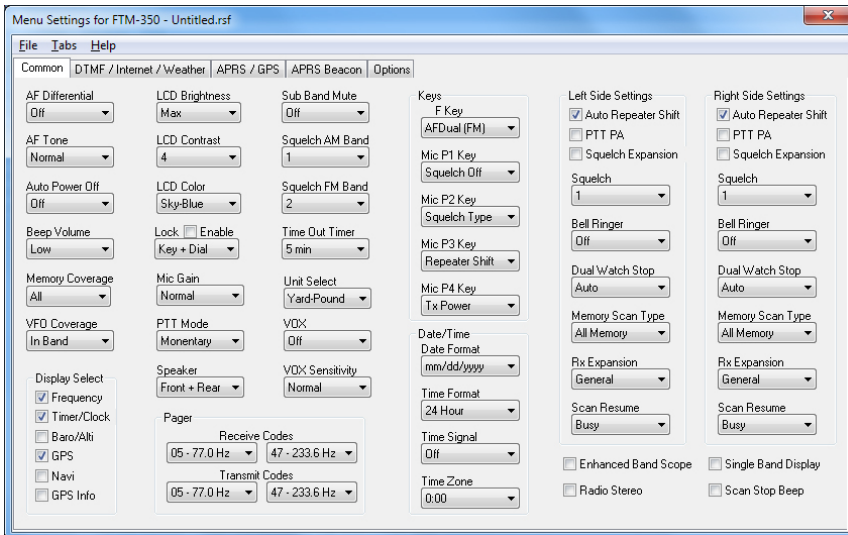
Left and Right Limit Memories

Limit Memories are used by the radio for Program Scan. Program the same details for Limit Memories as for regular memory channels. Many of the Limit Memories are preprogrammed in the radio and while the frequency can be changed to another within the band, they cannot be left blank.



VFO - Left and Right

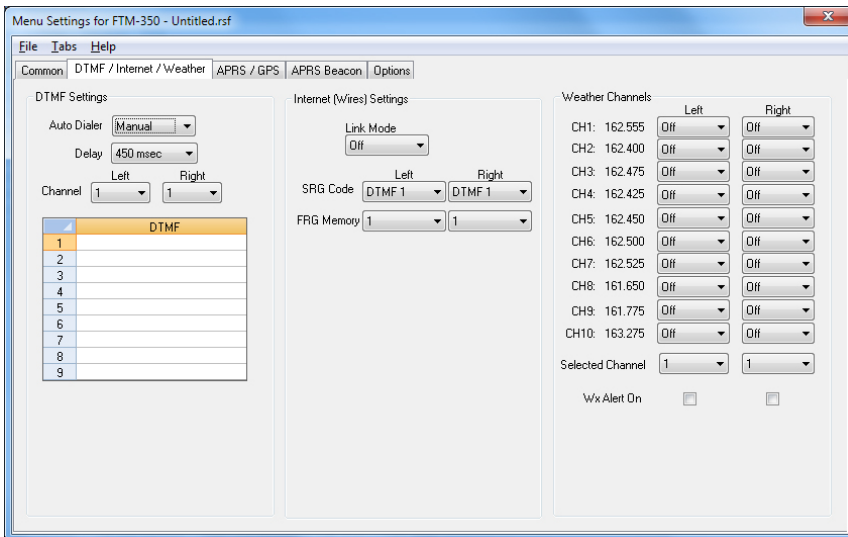
The program makes available the same VFO's as in the radio (usually one per band). Remember these are not real memory channels since the details are lost as soon as you tune the radio manually. There is no one button recall for these. You do not need to program into VFO before programming details into a memory channel. These channels are preprogrammed in the radio and while the frequency can be changed to another within the band, they cannot be left blank.



Common

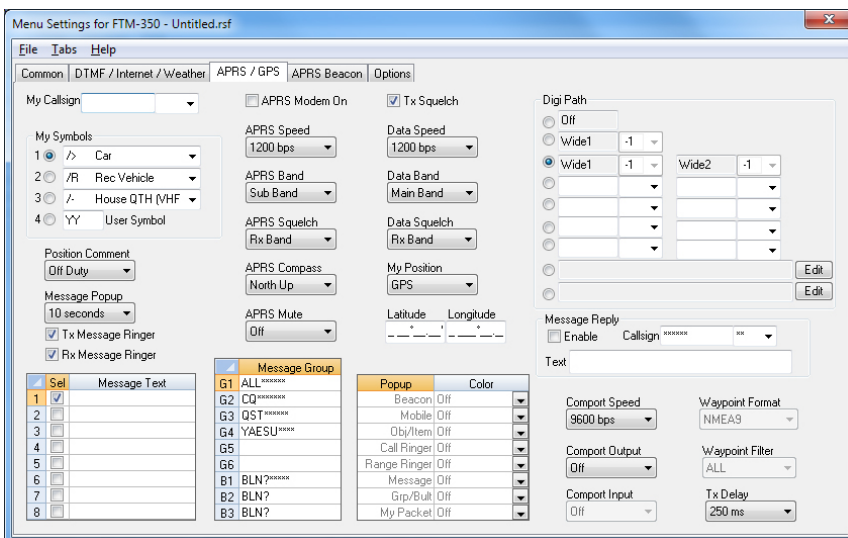
Use these screens to customize other set menu features of the radio. Check boxes toggle features on or off, drop down menus list all selections and blank boxes for personalized entry add to the ease of setting up your radio exactly like you want it.

The entries on the Settings screens are made for you to "Set and Forget". Once settings are customized, you are prompted to save before exiting. The saved settings will be there every time you create a new frequency file.



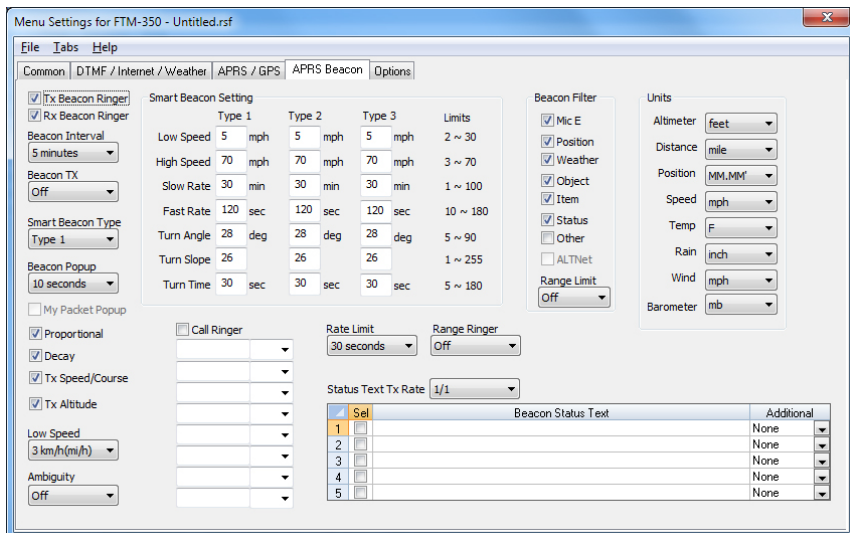
DTMF/Internet/Weather

Enter DTMF, Internet (wires) and Weather memory details to customize options for the functions of the radio.



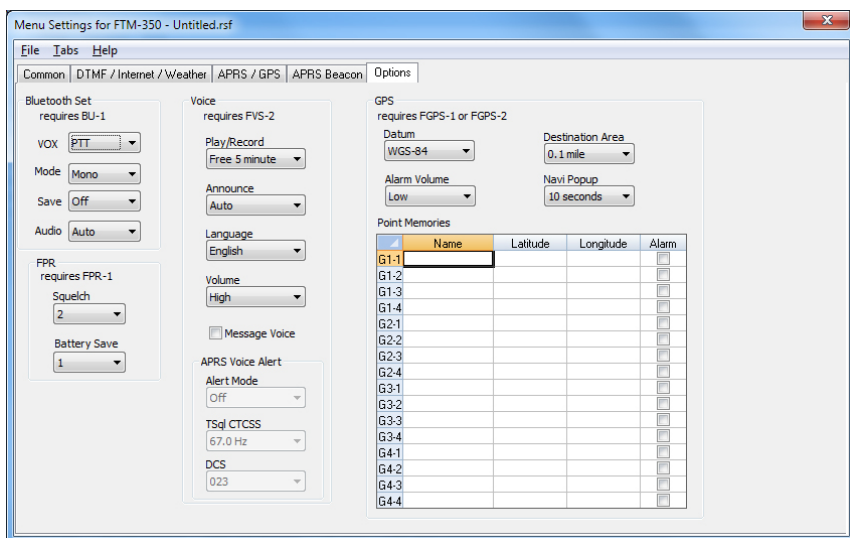
APRS/GPS

Customize options for APRS and GPS functions.



APRS Beacon

Customize additional features of the FTM-350 radio for advanced APRS functions.



Options

Use this screen to further customize the radio. Bluetooth, Voice, GPS and FR settings.