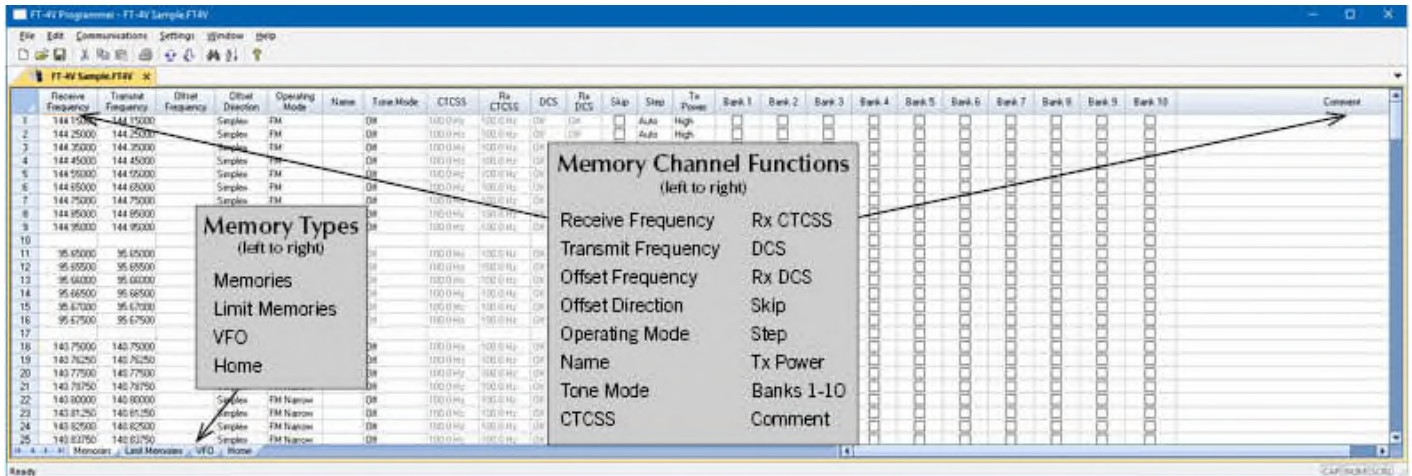


# Radio Programming Software for the Yaesu FT-4V and FT-4X



The YPS-4XV Radio Programming Software is designed to give you the ease and convenience of programming the memories and set menu options of your radio from your PC. Any memory channel with all its details can be sent to the radio with a simple keystroke.

## Memory Channels Include:

- 200 Memory Channels
- 20 Limit Memories (10 pair)
- 3 VFO Channels
- 4 Home Channels

## Other Menu Item Categories Include:

- Common
- DTMF

***The Radio Programmer Is for so Much More than Just Memory Management.***

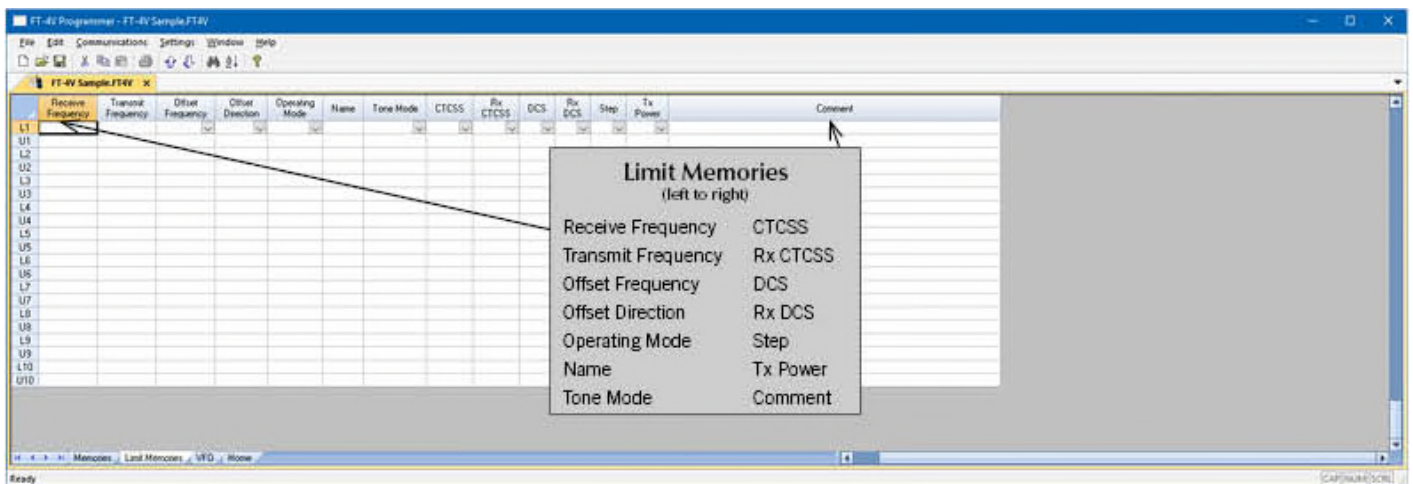
With the YPS-4XV Programmer you can begin a new “factory fresh” file into which frequencies and option settings are entered. Or, you can read from the radio, store these details on your computer and make changes. Then, with minimal button pushing, send the new configuration back to the radio.

The Programmer allows you to create and save as many files as you want for your radio. Files can even be shared between users via email or the Internet.

Managing all the options of this great radio becomes easy with the Programmer. The cut, copy, paste and insert features of the Programmer make channel management easier than ever.

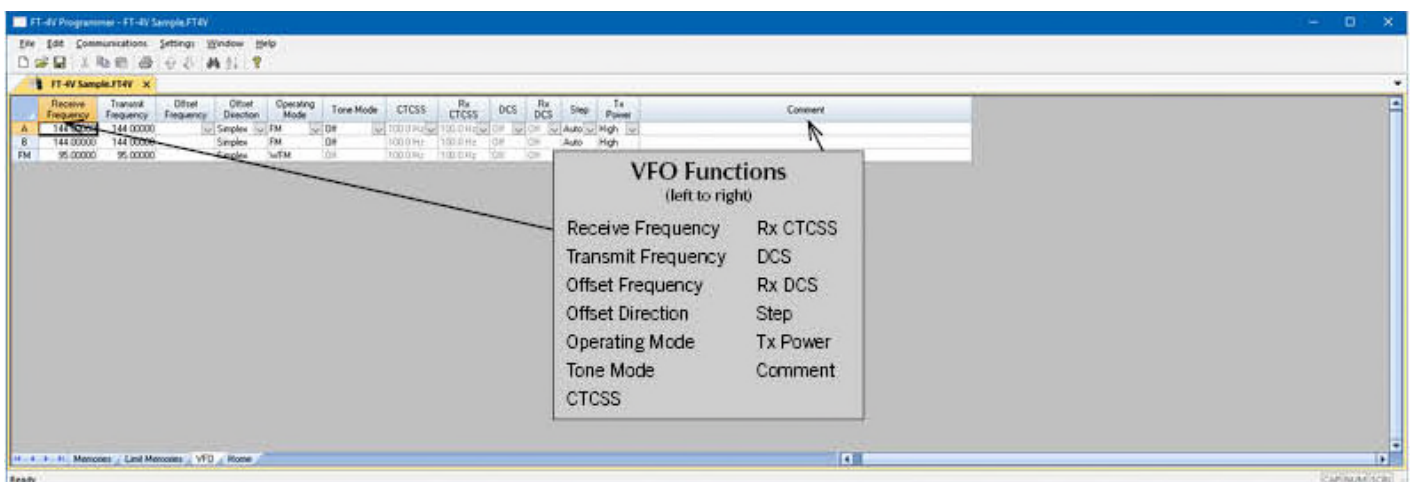
Open more than one file at a time. Memory channel information can be copied from one file to another within the Programmer making it really easy to set up a new file.





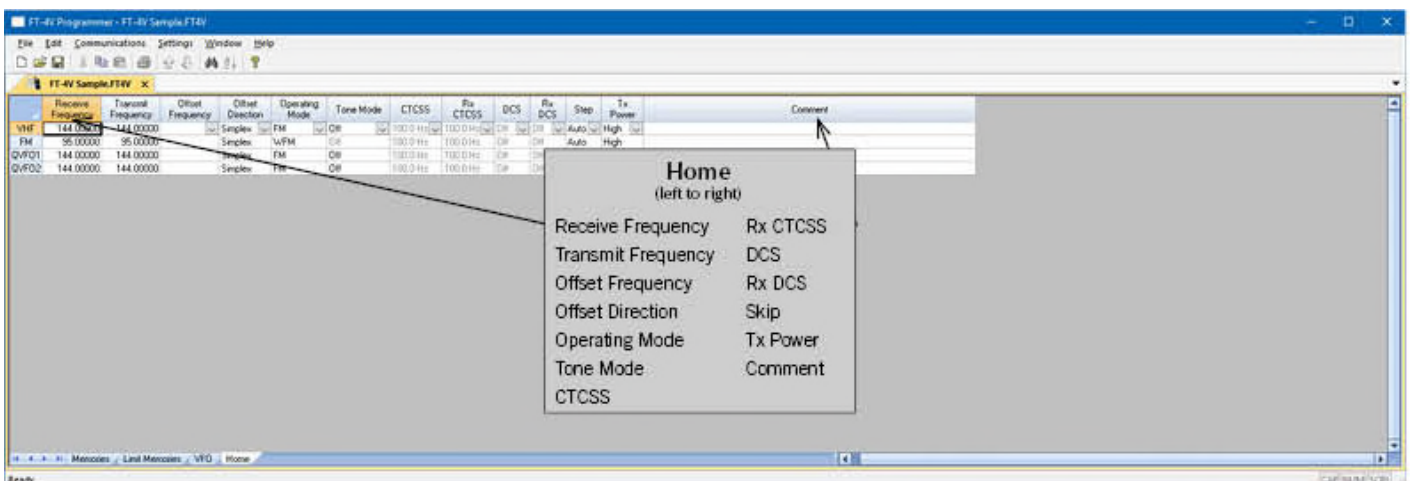
## Limit Memories

Limit Memories are used by the radio for Program Scan. Program the same details for Limit Memories as for regular memory channels. Many of the Limit Memories are preprogrammed in the radio and while the frequency can be changed to another within the band, they cannot be left blank.



## VFO

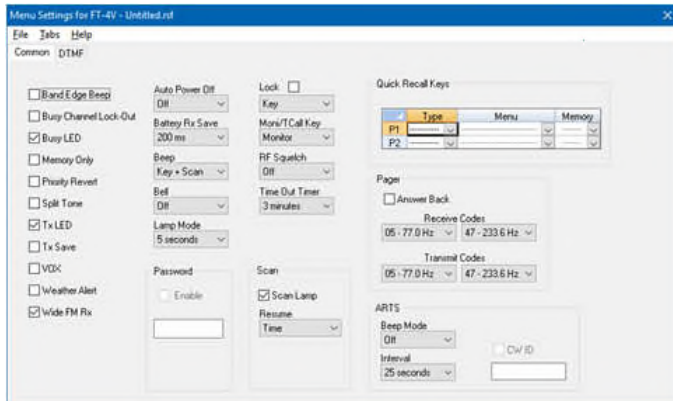
The program makes available the same VFO's as in the radio (usually one per band). Remember these are not real memory channels since the details are lost as soon as you tune the radio manually. There is no one button recall for these. You do not need to program into VFO before programming details into a memory channel. These channels are preprogrammed in the radio and while the frequency can be changed to another within the band, they cannot be left blank.



## Home

and while the frequency can be changed to another within the band, they cannot be left blank.

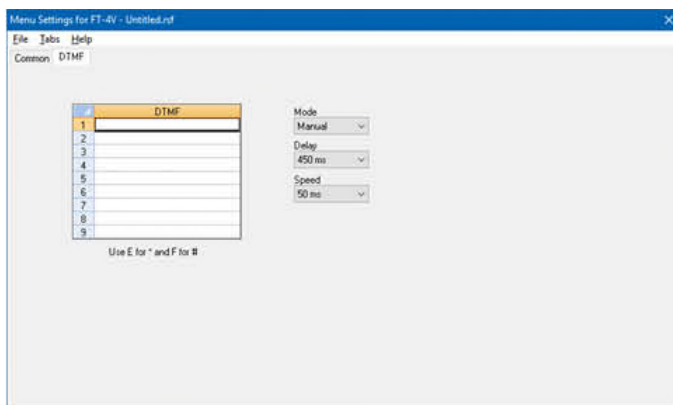
# Radio Menu Settings



## Common

Use this screen to customize many set menu features of the radio. Check boxes toggle features on or off, use drop down menus list all selections and blank boxes for personalized entry add to the ease of setting up your radio exactly like you want it.

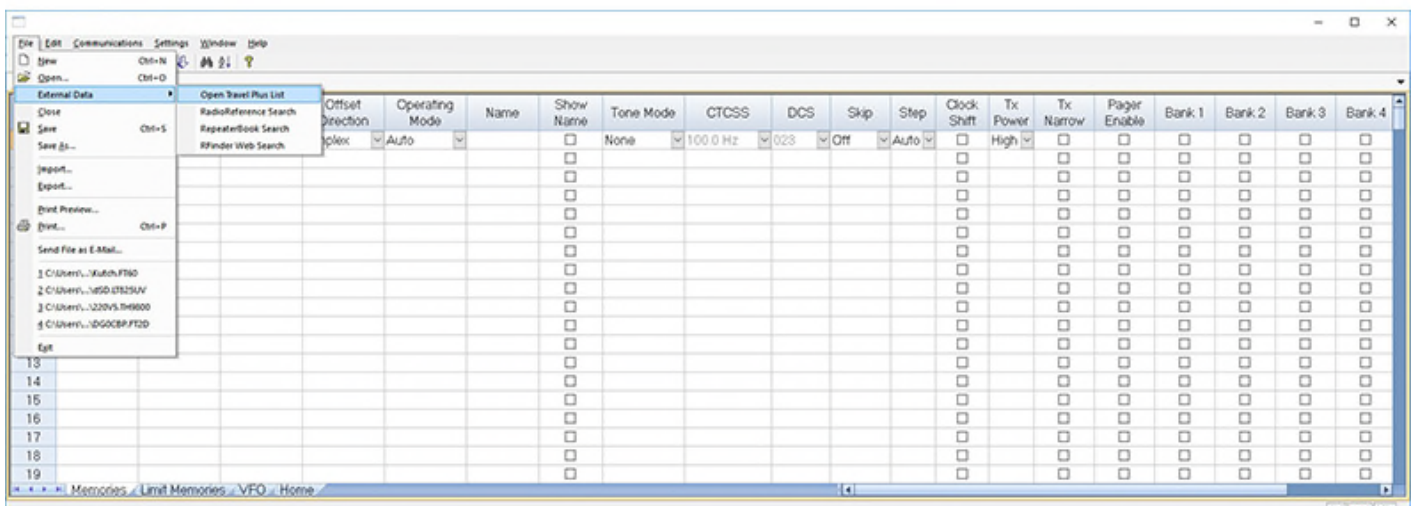
The entries on the Settings screens are made for you to “Set and Forget”. Once settings are customized, you are prompted to save before exiting. The saved settings will be there every time you create a new frequency file.



## DTMF

Enter DTMF memory details and customize options for this function of the radio.

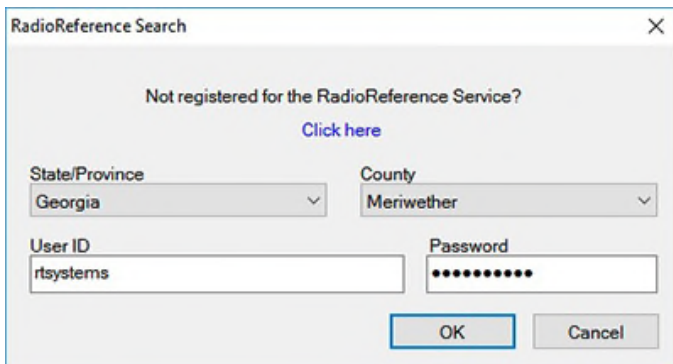
# External Data



RT Systems Programmers interface with four sources of data to make it easy for you to find

repeater information. Some of these sources even include information for repeaters outside the US. Your existing subscription to a service (where required) works in the programmer.

- **Open Travel Plus List** – This is a great source for those of you who still have the TravelPlus CDs (now discontinued) from ARRL since it does not require an Internet connection. Use it with TravelPlus from 2009 to 2015. For more details about using TravelPlus [see our video](#).
- **RadioReference Search** – This database has commercial and amateur repeaters. A subscription through RadioReference is required to access this data.
- **RepeaterBook Search** – This database contains domestic and international repeater listings. It is free to use from within the programmer.
- **RFinder Web Search** – RFinder is now ARRL's repeater directory service. It has both domestic and international repeater listings. RFinder offers the best search abilities with single location or routing options. A subscription through RFinder is required to access this data.

A screenshot of the 'RadioReference Search' dialog box. At the top, it says 'Not registered for the RadioReference Service?' with a blue link 'Click here'. Below this are two dropdown menus: 'State/Province' set to 'Georgia' and 'County' set to 'Meriwether'. There are two text input fields: 'User ID' containing 'rtsystems' and 'Password' containing a series of dots. At the bottom are 'OK' and 'Cancel' buttons.

RadioReference Search

Not registered for the RadioReference Service?  
[Click here](#)

State/Province: Georgia County: Meriwether

User ID: rtsystems Password: .....

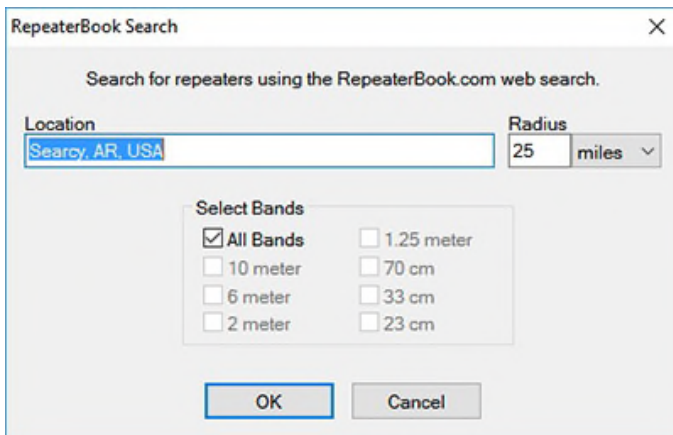
OK Cancel

## Radio Reference Search

An internet connection and subscription to the service are required for this search.

Enter the user e-mail and Password that you established when you purchased your subscription from RadioReference. Then select the **State**– Select the state from the list and **County**– Select the state from the list to get repeaters for that area.

Click OK.

A screenshot of the 'RepeaterBook Search' dialog box. It says 'Search for repeaters using the RepeaterBook.com web search.' Below is a 'Location' text input field containing 'Searcy, AR, USA'. To its right is a 'Radius' section with a text input field containing '25' and a dropdown menu set to 'miles'. Below these is a 'Select Bands' section with a grid of checkboxes. 'All Bands' is checked. Other options include '10 meter', '6 meter', '2 meter', '1.25 meter', '70 cm', '33 cm', and '23 cm'. At the bottom are 'OK' and 'Cancel' buttons.

RepeaterBook Search

Search for repeaters using the RepeaterBook.com web search.

Location: Searcy, AR, USA Radius: 25 miles

Select Bands

<input checked="" type="checkbox"/> All Bands	<input type="checkbox"/> 1.25 meter
<input type="checkbox"/> 10 meter	<input type="checkbox"/> 70 cm
<input type="checkbox"/> 6 meter	<input type="checkbox"/> 33 cm
<input type="checkbox"/> 2 meter	<input type="checkbox"/> 23 cm

OK Cancel

## Repeater Book Search

An Internet connection is required for this search.

**Location** – Enter City, State, Country (if not in the US).

**Radius** – Enter how many miles (up to 90 maximum) around this location.

**Select Bands** – This is not terribly important since it can be done on the next screen; however, you might want to limit the selection to reduce the number of repeaters in the results. Uncheck All Bands to make the individual bands active.

Click OK.

## RFinder Search

An internet connection and subscription to the service are required for this search.

Enter the User E-mail and Password that you established when you purchased your



RFinder Web Search

Not registered for the RFinder Service?  
[Click here](#)

User E-Mail:  Password:

☐ Location  
Location:  Radius (mile):

☒ Route  
Start:  End:  Route Width:

Waypoints:   
Add Remove Remove All Move Up Move Down

Map Route

OK Cancel

subscription from RFinder.

**Location** - Search around a specific city. Enter City, State and Country (if not US). Enter Radius up to 90 miles.

**Route** - Search along the route of a trip you're planning. Enter the Start and End cities, a width (remember to limit this since you can't hear repeaters that are too far away), and waypoints (other cities along the way). The search will travel along major interstate highways between the two cities. If the result is not along the route you plan to take, enter other waypoints on your route.

**Map Route** - Use this option to see the route the search will take. Close the map to return to the search screen.

Click OK.

The information is returned on a screen that is not yet ready for radio programming, this screen lets you examine the data to see if the results are about what you expected. You might find that you spelled the city name wrong which resulted in nothing being returned; or that you want to pull repeaters from further away; or you want to get repeaters for different bands.

	Output Frequency	Input Frequency	Offset Direction	Callsign (Name)	CTCSS	DCS	City	State	Region	Repeater Notes (Comment)	Sponsor
1	145.11000		Minus	WC8OH	67.0		Dayton	OHIO	MONTGOMERY	o 67.0 (CA)je	WCOAR
2	146.64000		Minus	K8MCA			Dayton	OHIO	MONTGOMERY	o 67.0e	McCoAR
3	146.82000		Minus	WA8PLZ	77.0		Dayton	OHIO	MONTGOMERY	o 77.0e	MWA
4	146.94000		Minus	W8BI	123.0		Dayton	OHIO	MONTGOMERY	o 123.0a	DARA
5	146.98500		Minus	WFSM	123.0		Dayton	OHIO	MONTGOMERY	o 123.0i	MVRFG
6	147.13500		Plus	W8SMC			Dayton	OHIO	MONTGOMERY	o (CA)z	FaroutAR
7	147.36000		Plus	WA8PLZ	77.0		Dayton	OHIO	MONTGOMERY	o 77.0e	MWA
8	145.33000		Minus	W8DYY			Miamisburg	OHIO	MONTGOMERY	o (CA)e	MoundA
9	146.77500		Minus	W6CDR	77.0		Miamisburg	OHIO	MONTGOMERY	o 77.0	W6CDR
10	147.01500		Plus	W8NCI	77.0		Miamisburg	OHIO	MONTGOMERY	o 77.0	W8NCI
11	147.07500		Plus	W8KMC	67.0		Miamisburg	OHIO	MONTGOMERY	o 67.0	KMCN
12	147.19500		Plus	W8DYY			Miamisburg	OHIO	MONTGOMERY	o (CA)eW/X	MoundA
13	146.91000		Minus	W8GCA			Bellbrook	OHIO	GREENE	o 67.0	GICARE
14	147.04500		Plus	W8DGN			Bellbrook	OHIO	GREENE	o 67.0	BARC
15	145.43000		Minus	W8SART	88.5		Clearcreek Twp	OHIO	WARREN	o 88.5e	CtrvIAR
16	145.41000		Minus	K8FBN	118.8		Farbom	OHIO	GREENE	o 118.8e	UpVlyAR
17	145.29000		Minus	W8ZVL	118.8		Franklin	OHIO	WARREN	o 118.8 (CA)r	W8ZVL
18	145.49000		Minus	W8CYE	77.0		Springboro	OHIO	WARREN	o 77.0e	DRAKE
19	147.24000		Plus	K8KID			Tipp City	OHIO	MIAMI	o	8424FM
20	147.16500		Plus	N8JFA			Xenia	OHIO	GREENE	o (CA)e	XeniaAR
21	146.61000		Minus	W8BLV	77.0		Middletown	OHIO	BUTLER	o 77.0 TTel	Dial ARC
22	147.31500		Plus	W8JEU	77.0		Middletown	OHIO	BUTLER	o 77.0 TTel	Dial ARC
23	146.86500		Minus	WC8EMA	118.8		Lebanon	OHIO	WARREN	o 118.8a (CA)elr	WarrenE

Make selections for Name and Comment

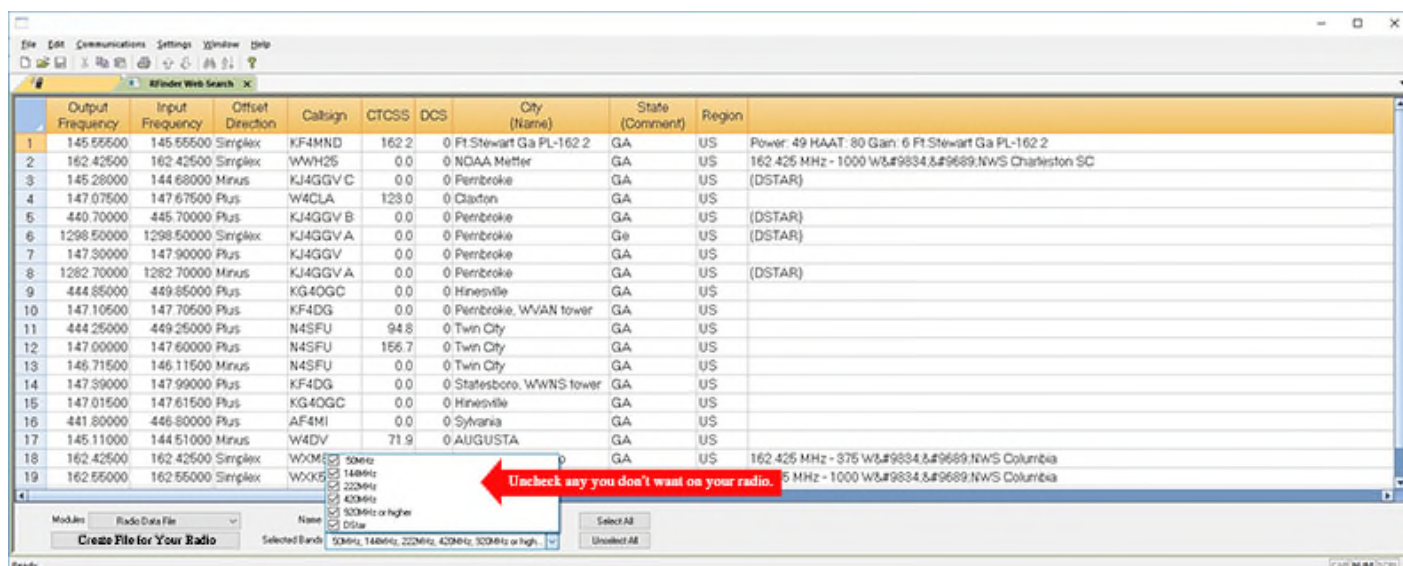
Modules:  Name:  Callsign:  Comment:  Repeater Notes:  Select All Unselect All

Selected Bands:

Select what the radio uses as the Name display. You can select the Callsign (default), City, State, Region, Repeater Notes or Sponsor. Notice that each of these categories is a column of information in the grid. You will see those names at the top of the screen. You are selecting the information in that column for the Programmer to set up for the Name field. NOTE: The radio will truncate (cut off) the information in the field at the maximum number of characters it can use for the Alpha/numeric display. You might end up with only the first four or six characters of the information in the column. Consider this when selecting the information.

Select what the Programmer will use in the Comment field. This information does not go to the radio but can be very helpful for identifying a channel as you work with it on the spreadsheet. You

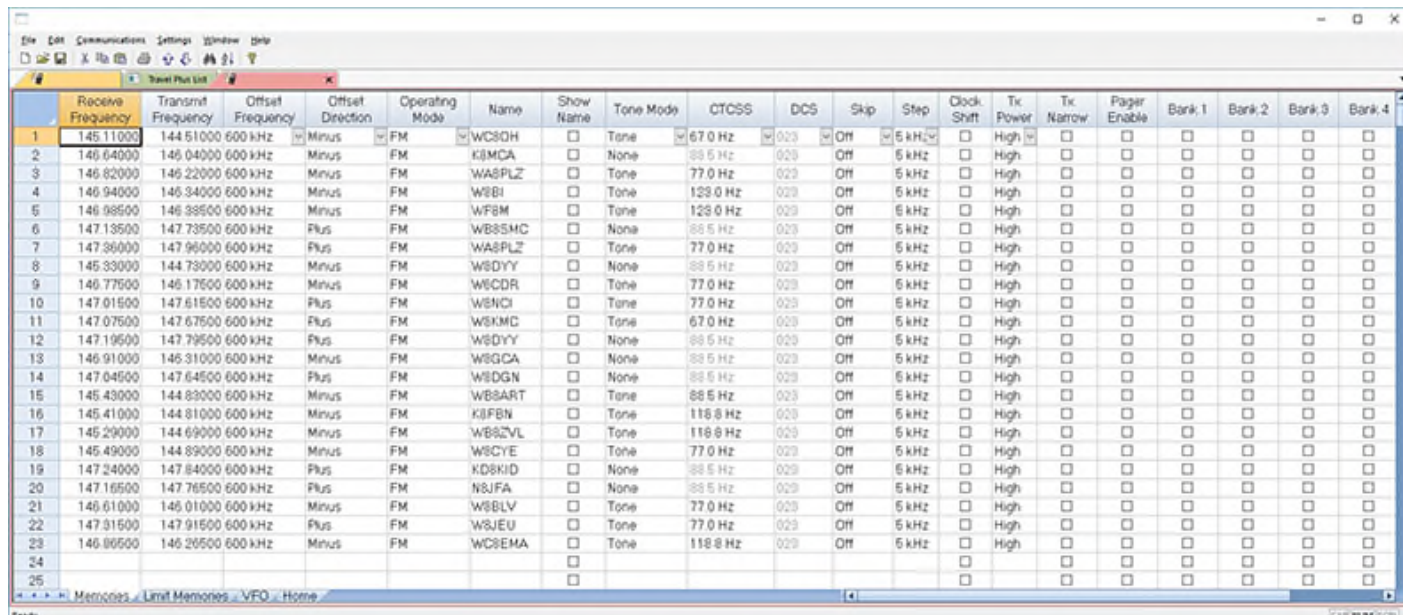
can print this information along with other details for the channels to have it on hand as you travel. Again, select Callsign, City, State, Region, Repeater Notes or Sponsor.



## Sorting Return Data

The screen that opens after you click OK for one of the external data searches gives you the ability to remove repeater information that your radio cannot use. You might have a radio that does not do DMR, DStar or Yaesu Fusion. Simply uncheck these in the list. The channels are removed from the list automatically.

Once you finish eliminating frequencies or modes your radio cannot use, select your radio from **Modules** and then click **Create file for (your radio)**.

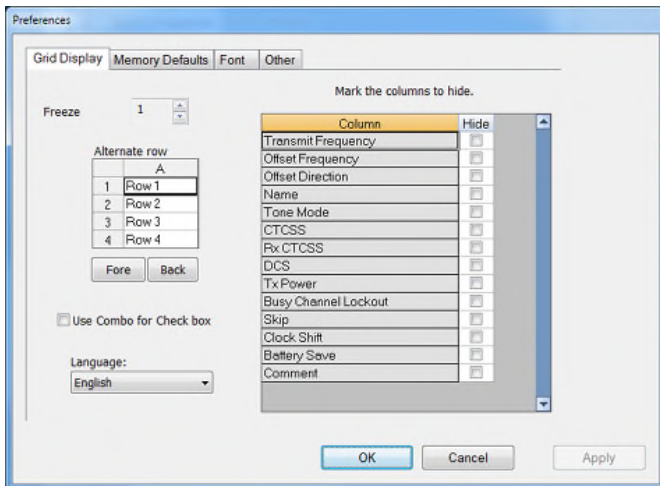


## Resulting File

After clicking Create File for (Your radio) the programmer creates the file that you use to program your radio. Notice that all the Tones are set up with the tone frequencies. All done automatically.

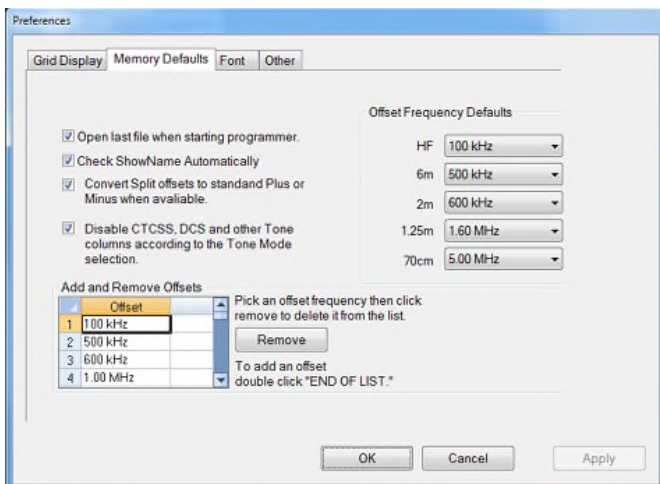
What a list and all you did was enter a location!

# Preferences Customize the Programmer



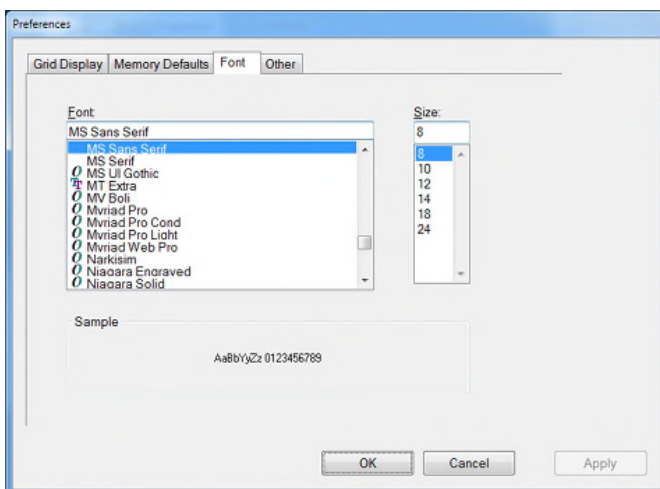
## Grid Display

- RT Systems now available in English, French, German, Italian, Spanish, Portuguese and Japanese.
- Set colors for text (Fore) or background (Back) of alternate rows for easier viewing across the columns.
- Freeze columns to keep information on the screen as you scroll to the right of the page.
- Hide columns you don't use. Customize your printout: hidden columns do not print.
- Use Combo for Check boxes – changes the grid to eliminate check box selections that are disabled on some systems.



## Memory Defaults

- Set options to control auto fill information for memory channel entries.



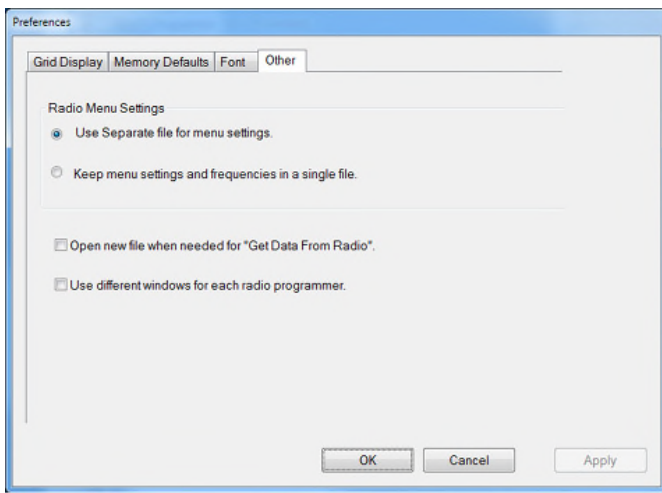
## Font

- Set options to control the font in the column headers of the channel entry screens. Select any font and font size available on your computer.

## Other

- Set options to control how the programmer handles the global Radio Menu Settings file.





- Separate (default) handles the global settings of the radio in a “set and forget” fashion. Once you set these up and save the file you won’t have to reset them for a new frequency file.

- Together as one gives you the ability to create files that are complete with frequencies and customized global settings. In this mode, each file begins with factory defaults for every option of the radio.

- Check “Get data from Radio” new file option to prevent data loss when you read from your radio into the programmer.
- Check “different window” option to make the programmer for a different radio run in completely separate window rather than in a separate tab of the same window.



**THE NETHERLANDS | Roermond**

Tel. +31 (0)475-327390  
[www.classicinternational.eu](http://www.classicinternational.eu)

**GERMANY | Mönchengladbach**

Tel. +49 (0)2166-33061  
[www.classicinternational.eu](http://www.classicinternational.eu)