

## 2. Confirmation (IMPORTANT!)

After the installation has been completed, use PC's Device Manager to confirm that the virtual drivers have been successfully installed.

### To open the Device Manager screen

#### Windows 10

1. Right-click the Start icon.
2. Click "Device Manager."

#### Windows 8.1

1. Right-click the Start icon.
2. Click "Device Manager."

#### Windows 7

1. Click the Start icon to open the Start menu.
2. Right-click on Control Panel in the right column, then click on Device Manager.

### To confirm the virtual drivers

1. Open the Device Manager screen.  
① If "User Account Control" is displayed, click <Yes>.
2. Double-click "Sound, video and game controllers," and confirm that "Icom Virtual Audio Driver" is included in the list.
3. Double-click "Multi-port serial adapters," and confirm that "Icom Virtual Serial Driver" is included in the list.

**NOTE:** If "Icom Virtual Audio Driver" or "Icom Virtual Serial Driver" is not displayed, the driver may not have been properly installed. Install the virtual driver again, following "Individual installation" in this guide.

**TIP:** To configure the remote control system, refer to the RS-R8600 Instruction Manual that can be downloaded from the Icom website.

## ■ When individually installing the virtual drivers

If a virtual driver, "Icom Virtual Audio Driver" or "Icom Virtual Serial Driver," has not been successfully installed, individually install them according to the following procedure.

1. Log in as the **administrator**.  
① **Confirm** no other applications are running.
2. Click "All Apps" in the Start menu and then "Icom Remote Utility," and then click "Virtual Driver Maintenance."
  - Windows 8.1: The Search charm on the right of the screen  
→ Apps → Icom Remote Utility
  - Windows 7: <Start> → All Programs → Icom Remote Utility① If "User Account Control" is displayed, click <Yes>.

3. "Virtual Driver Installer" is displayed, then click <Install>.
4. If both drivers have not been installed, the installer starts the installation. If either of them has already been installed, a confirmation screen will be displayed. Click <Yes> to start overwriting, or click <No> to skip the installation.
5. After the installation has completed, "Install Finished" is displayed, then click <OK>.
6. If a dialog that requires restarting the PC is displayed, click <Yes>.

## ■ When uninstalling the software or the virtual drivers

To uninstall the software or virtual drivers, follow the procedures below.

### To uninstall the software as well as the virtual drivers

Uninstall using the uninstall a program function in "Programs and Features", in the Windows Control Panel.

### To uninstall only the virtual drivers

Uninstall using Windows Device Manager.  
① You can also uninstall using "Virtual Driver Maintenance."  
(See step 2 in "When individually installing the virtual drivers" in this guide.)

# ICOM PREPARATIONS

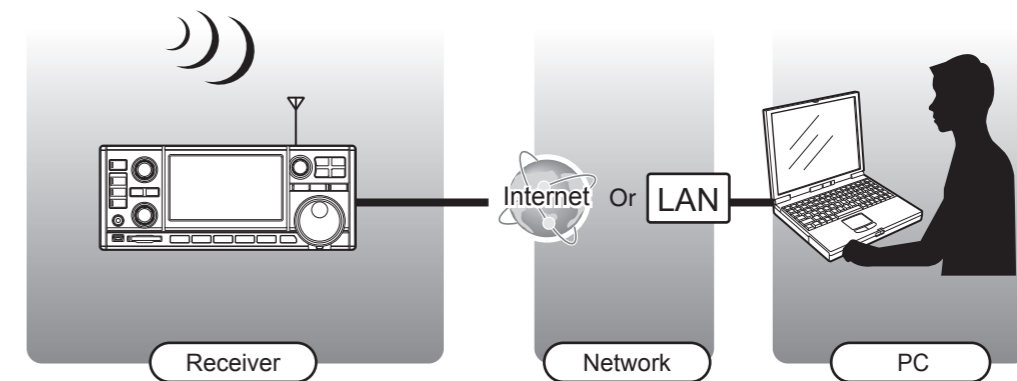
## REMOTE CONTROL SOFTWARE RS-R8600

Thank you for choosing this Icom product. This product is designed to remotely control the IC-R8600 through a network. Read this guide before using the software. This guide contains instructions on how to install the RS-R8600.

## About the remote control system

An RS-R8600 remote control system basically consists of a receiver with the Server function and a PC (Client) through a network.

With the RS-R8600, you can configure the remote control system through the Internet, or a LAN. To remotely control the receiver, it should be connected to a network.



Routers or other devices are not shown.

# System requirements

## Supplied items

- CD (including the RS-R8600 installer, the USB driver, and the USB driver Installation Guide)
- PREPARATIONS (this guide)

## Required items

### Receiver

- IC-R8600 (IP network capable)
  - ① As long as the RS-R8600 is used only within a local area network, the receiver and a PC are not required to be connected to the Internet.

### PC

- A PC (IP network capable)
- A speaker (User supplied)
  - ① Connect it to the PC's audio jack.

## IMPORTANT: To configure the remote control system through the Internet

If you configure the remote control system through the Internet, you need to configure your router to allow access from the Internet on both the receiver and the PC. Configure the port forwarding settings, and IP filter settings on your router, for port numbers 50001, 50002, and 50003.

- ① Refer to your router's documentation for details about how to configure the settings.

## NOTE: Before installing RS-R8600

If you installed the RS-BA1 in your PC, confirm the RS-BA1 version.

If the RS-BA1 version is 1.93 or earlier, download the latest version from the Icom website, and update your RS-BA1.

<http://www.icom.co.jp/world/support/>

- ① To check the software version, open the Remote Controller's information window. (Help menu → About RS-BA1)

## TIP: To read the Instruction Manual (PDF file)

The RS-R8600 Instruction Manual (PDF file) can be downloaded from the Icom website. The Manual provides detailed instructions on how to configure your own remote control system.

- ① Adobe® Acrobat® Reader® is required to read the PDF file. If necessary, download it from the website of Adobe Systems Incorporated.

## Minimum system requirements

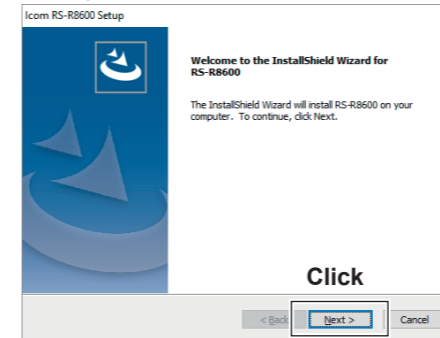
PC	
When only one receiver and one PC are connected.	
<b>Operating System</b>	Microsoft® Windows® 10 (32/64 bit) Microsoft® Windows® 8.1 (32/64 bit) (Except for Microsoft® Windows® RT) Microsoft® Windows® 7 (32/64 bit) ① In this guide, the OSs are described as "Windows 10," "Windows 8.1," and "Windows 7."
<b>CPU</b>	Pentium 4 1 GHz or better (A multicore CPU is recommended.)
<b>Memory</b>	Windows 10 (32 bit): 1 GB or more Windows 10 (64 bit): 2 GB or more Windows 8.1 (32 bit): 1 GB or more Windows 8.1 (64 bit): 2 GB or more Windows 7 (32 bit): 1 GB or more Windows 7 (64 bit): 2 GB or more
<b>HDD</b>	70 MB or more of available disk space. (The recording function will need more space.)
<b>Display Resolution</b>	1024 × 600 pixels, or more
<b>Network data speed</b>	Upload 350 kbps, or faster Download 500 kbps, or faster (When the default audio quality is used)
<b>Remark</b>	We recommend the use of the on-board sound chipset. The CPU may have a heavy load when an external sound device, such as USB audio converter, is used.

This is the minimum system requirement to use the RS-R8600 software. Because the system requirements may differ, depending on your PC environment (permanently running software such as antivirus software, peripheral devices, network condition, settings of OS and other software), the operation is not guaranteed.

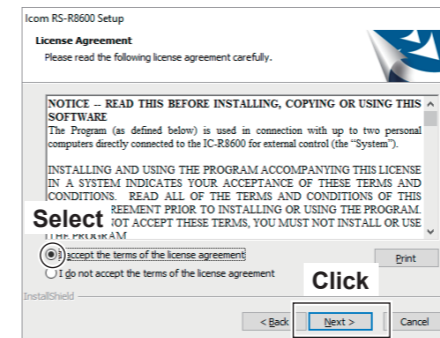
# 1. Software and driver installation

The RS-R8600 installer will install the Remote Utility (system configuration software), Remote Control (remote control software), Icom Virtual Serial Port, and Icom Virtual Audio Device.

1. Log in as the **administrator**.
  - ① **Confirm** no other applications are running.
2. Insert the CD into a CD drive.
3. Double-click the "setup.exe" in the "RSR8600" folder on the CD.
  - ① If "User Account Control" is displayed, click <Yes>.
4. "Choose Setup Language" is displayed. Select "English" or "Japanese," and then click <Next>>.
5. "Welcome to the InstallShield Wizard for RS-R8600" is displayed, and then click <Next>>.



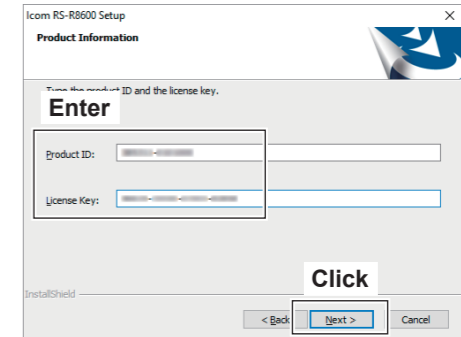
6. "License Agreement" is displayed. After reading the contents, if you agree with it, select "I accept the terms of the license agreement," and then click <Next>>.



7. "User Information" is displayed, and then enter your name and your company name (optional).

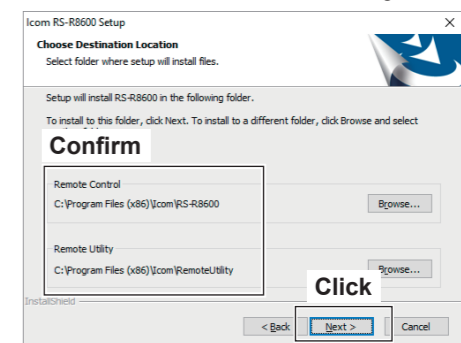
8. "Product Information" is displayed. Enter the product ID number and the Licence key, and then click <Next>>.

- ① Enter the Product ID and Licence key that are on the label attached to the CD case.



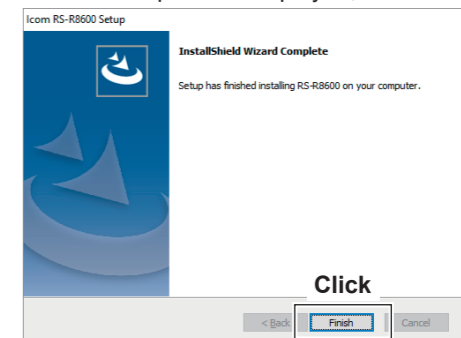
9. "Choose Destination Location" is displayed, and then click <Next>>.

- ① To select another destination folder, click <Browse...>, and select a new location before clicking <Next >>.



10. During the installation, the installer may display security warning dialogs about installing "Icom Virtual Serial Driver" and "Icom Virtual Audio Device." If they are displayed, click <Continue>.

11. After the installation has completed, "InstallShield Wizard Complete" is displayed, then click <Finish>.



12. Eject the CD.