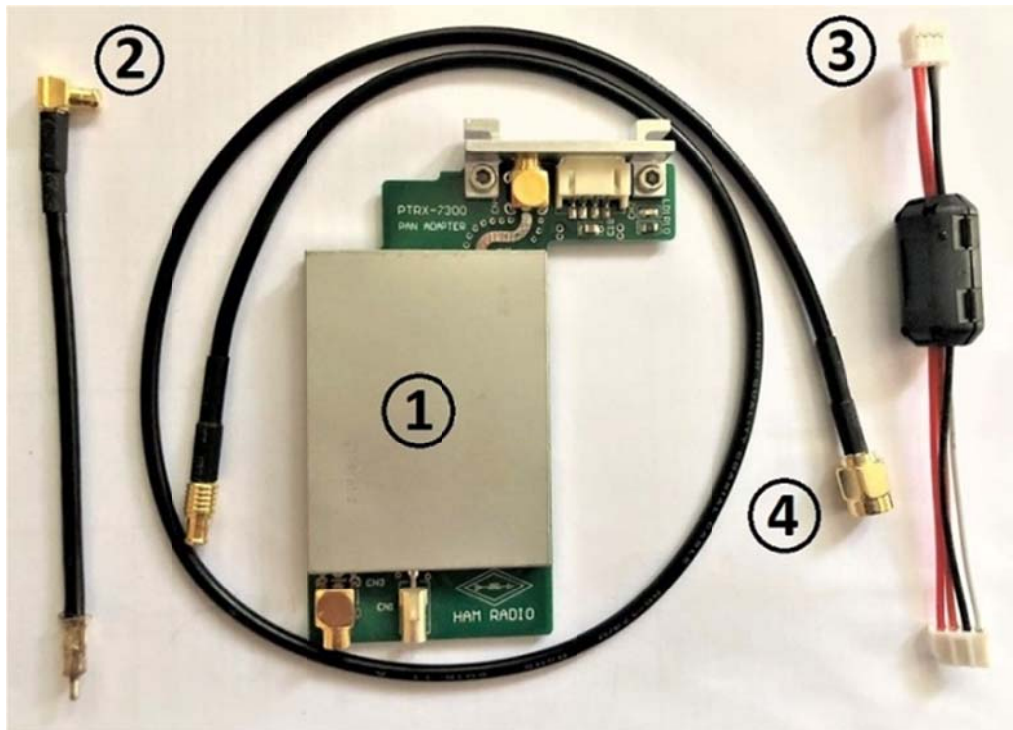


### PTRX-7300 INSTALLATION GUIDE

This document describes installation of PTRX-7300 Panadapter Module for ICOM IC-7300 radio. PTRX-7300 enables extending internal receive/transmit RF signals of IC-7300 as standart 50 Ohm output on the rear panel. This 50 Ohm output can be used to monitor spectrum/waterfall of receive and transmit signals by connecting to SDR.

This installation is solderless and reversible. The kit consist of following items:

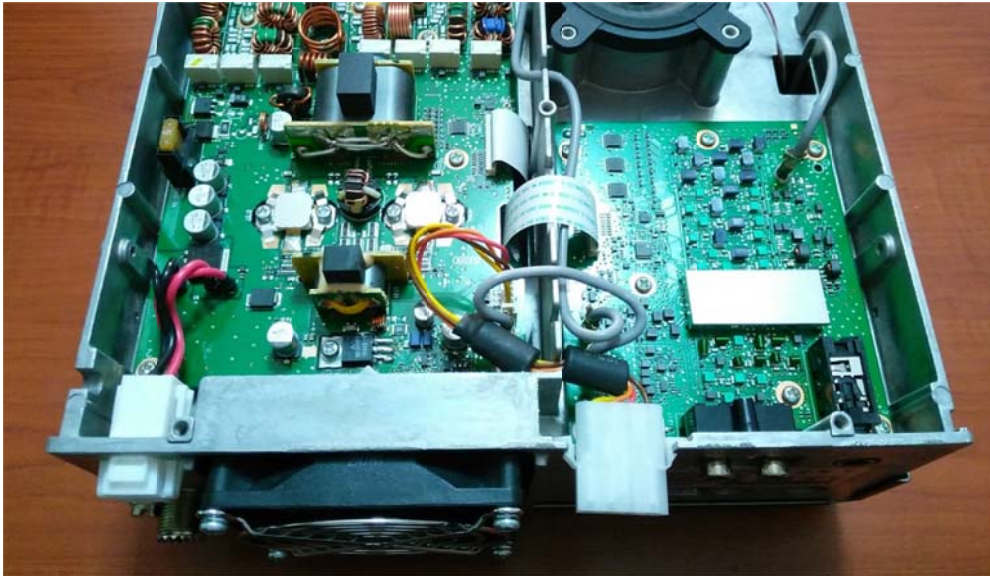
1. PTRX-7300 Panadapter Module
2. TMP-MCX RG-174 Cable Assembly
3. 4-pin/4-pin PH2.0 Tuner Cable Assembly
4. SMA-MCX RG-174 Cable Assembly



#### Installation Instructions

1. Firstly, remove the top cover of IC-7300.
2. PTRX-7300 Panadapter Module is installed in place of tuner jack on the rear panel. Slide the jack upward and separate the jack with its cable assembly from rig. This cable assembly will function as external tuner connection after installing PTRX-7300 Panadapter Module.

*External Antenna Tuner Jack*



*After removing Tuner Jack with Cable Assembly*

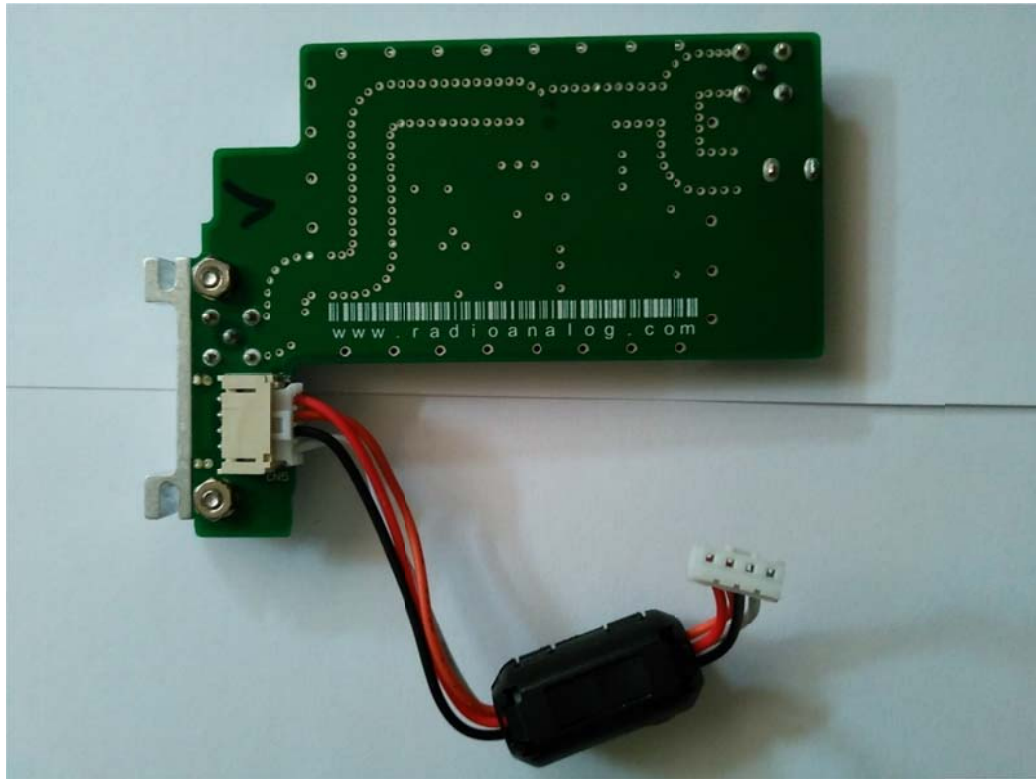


*Removed Tuner Cable Assembly*



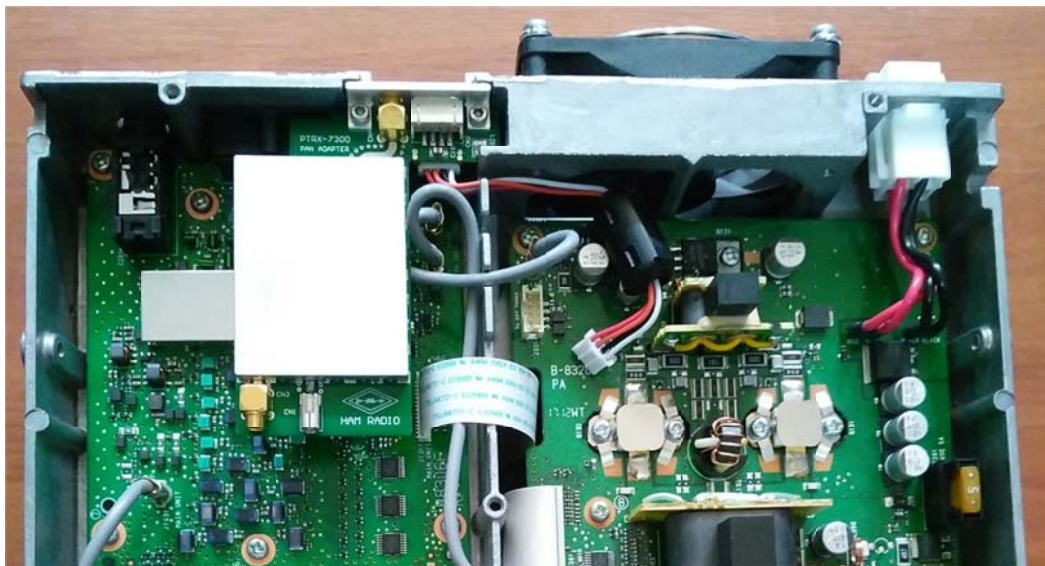
3. Plug the one end of the **4-pin/4-pin PH2.0 Tuner Cable** (included in PTRX-7300 Kit) into mating connector on the bottom side of PTRX-7300 Panadapter Module.

*Preparing PTRX-7300 Panadapter Module*



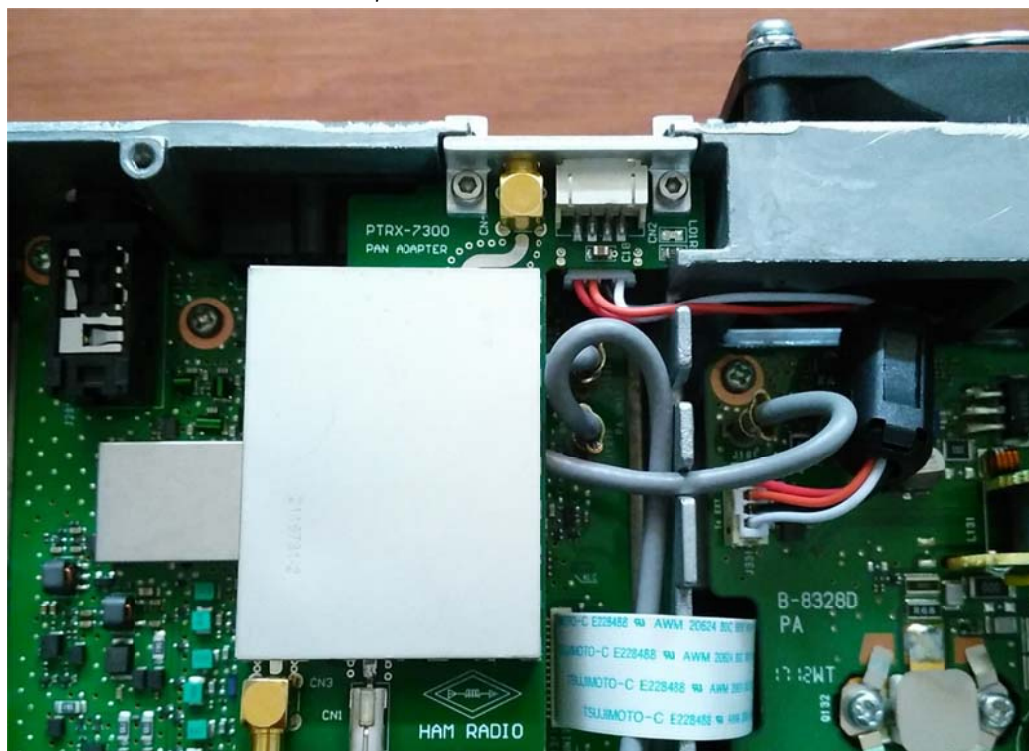
4. Slide the PTRX-7300 Panadapter Module into the Tuner Jack slot as shown below.

*Insertion of PTRX-7300 Panadapter Module*



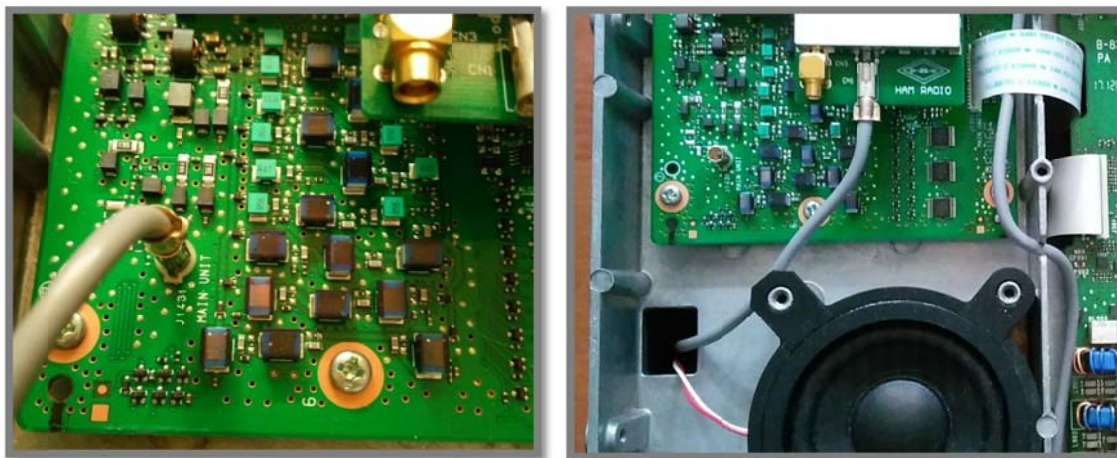
5. Plug the other end of the **4-pin/4-pin PH2.0 Tuner Cable** (included in PTRX-7300 kit) into open J331 connector on the rig.

*Completed Antenna Tuner Connection*



6. There is a grey coaxial cable with TMP connector going to J1431 on the PCB of the rig. Pull the cable out of jack J1431 and plug it into TMP jack on the PTRX-7300 Panadapter Module.

*Unplugging TMP cable from rig and Plugging into Panadapter*



7. Plug the TMP end of the **TMP-MCX RG-174 Cable** (included in PTRX-7300 Kit) into the open J1431 jack on the rig and MCX end of the cable into the MCX jack on the PTRX-7300 Panadapter Module.

### Completed Cable Installations



8. Replace the top cover of the rig.
9. Use **SMA-MCX RG-174 Cable Assembly** (included in PTRX-7300 Kit) for SDR connection. Plug MCX end of the cable into PTRX-7300 Panadapter Module jack on rear panel and SMA end into SMA jack of your SDR.
10. Removed internal tuner cable assembly of the rig is used externally after installing PTRX-7300 Panadapter Module. Plug smaller rectangular connector into the mating connector of the PTRX-7300 Panadapter Module on rear panel and other end into your Antenna Tuner.

### External Connections



11. Panadapter is now ready to use. For further information visit [www.radioanalog.com](http://www.radioanalog.com)

*Disclaimer: We are not liable for any damage to equipment caused by using this extension. Use it at your own risk.*